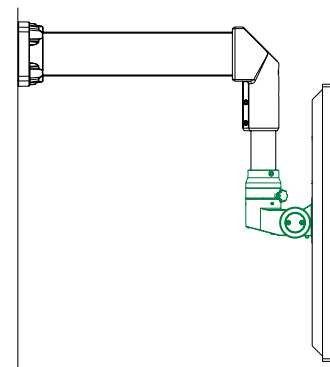
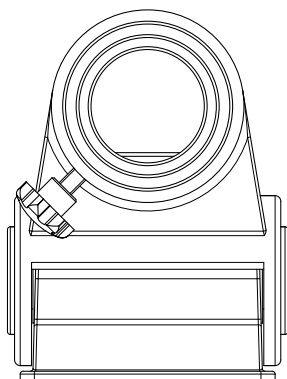
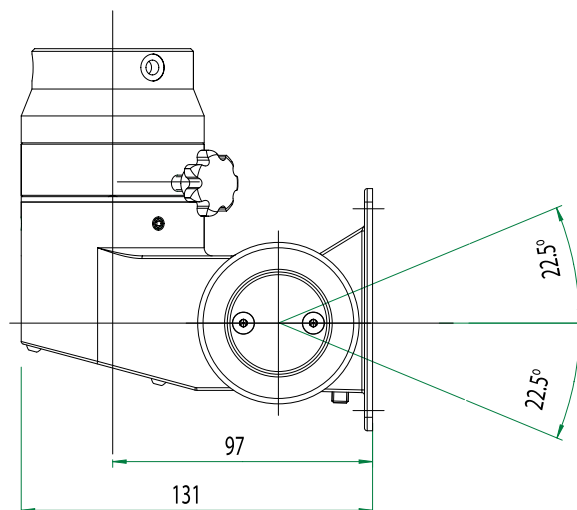
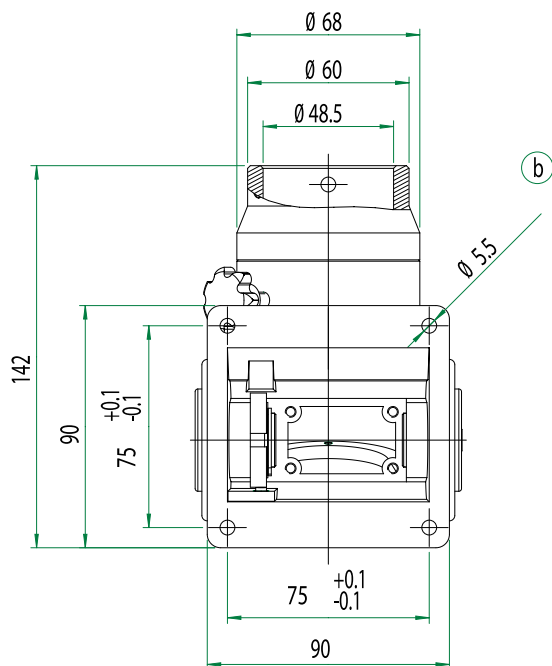


Art. Nr. / Part No.:  
30101-01



Zubehör (optional) / Accessories (optional):  
VESA 100 Adapterplatte Art. Nr.: 40190-02  
VESA 100 adaptor plate Part No.: 40190-02

- ▶ Anbindung an HLT / Ø 48 mm Tragarmsystem  
Connection at the HLT / Ø48 suspension system
- ▶ Schutzart IP 54 (option)  
Protection class IP 54 (option)
- ▶ VESA® 75 oder 100 (option) möglich  
VESA® 75 and 100 (option) possible
- ▶ Optional Kabelausschuss beidseitig möglich  
Both-way cable ducting system possible (option)
- ▶ Farbe: ähnlich RAL 7016 (Anthrazitgrau)  
Color: similar to RAL 7016 (anthracite grey)
- ▶ Gewicht: ca 1,4 kg  
Weight: approx. 1,4 kg



Beispielkonfiguration  
Example configuration

Alle Angaben in mm / All specifications in mm