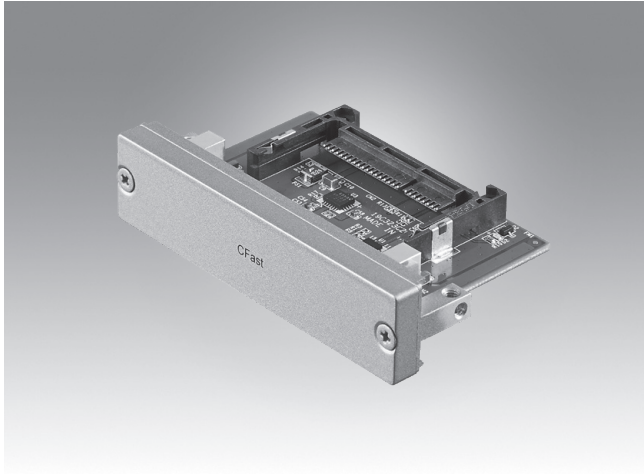


PCM-23C1CF-CE

1 CFast Slot with Cover Protection



Features

- Meets Advantech iDoor technology standard
- PCM-23C1CF includes single CFast II slot which utilizes existing internal HDD cable
- PCM-23C1CF includes a captive screw type cover for CFast card protection
- Supports UNO-1372 DIN-Rail controller series
- Supports TPC-B500/B510 modular panel computers series
- Supports TPC-1x51 (B) thin client panel computers series



Introduction

The PCM-23C1CF-CE series are storage modules from Advantech iDoor Technology. They are compatible with the PCI Express® Mini Card Specification Revision 2.0. They include no-battery MRAM for automation machine memory backup, SATA to CFast on ThinClient terminals offering storage with longer MTB repairs and quick maintenance. This is a flexible design that enables customers to customize their features with iDoor Technology.

PCM-23C1CF Specifications

General

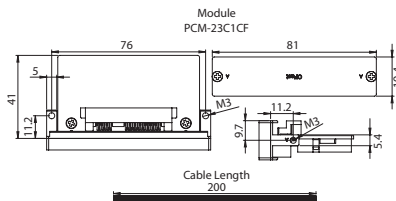
- **Dimensions** 19.4 x 81 x 41 mm
- **Features** I/O plate to SATA connector
- **Form Factor** I/O Plate
- **Contents** I/O module, bracket
- **Operating Temperature** -20 ~ 60°C (-4 ~ 140°F)
- **I/O Port** 1 slot with CFast Type II connector
- **Color** Silver

Ordering Information

- **PCM-23C1CF-CE** SATAII 3G/Sec to CFast
- **1700033548-01** The CFast power cable for UNO-1372G series
- **1700033645-01** The CFast power cable for TPC-1x51(B) series
- **1700033614-01** The CFast power cable for TPC-B500/510 series

* The power cable is essential for work normally.

PCM-23C1CF Dimensions



PCM-23C1CF User scenario

