

# UTC-515

## 15.6" Ubiquitous Touch Computer UTC-515J with Intel® Celeron® J6412



DeviceOn/iService



### Features

- Low-power, fanless system design
- Built-in Intel® Celeron® J6412 (Default)
- 15.6" monitor with 16:9 widescreen display
- IP65-rated front panel for water and dust resistance
- All-in-one aluminum extrusion design
- Supports both landscape and portrait screen orientations
- VESA 100 mm standard mounting holes for varied mounting demands
- Side groove design for integrating peripherals
- Optional Full HD (1920 x 1080) LCD panel
- Support DeviceOn/iService software for remote device management
- I platform supports TPM 2.0

### Introduction

UTC-515 is an all-in-one computer with an Intel® Celeron® J6412 processor, widescreen LCD touch panel, and side groove design for integrating optional peripherals. Designed for diverse self-service, content broadcasting, and interactive signage applications, UTC-515 systems can be deployed in a wide range of usage scenarios for enhancing customer satisfaction, furthering brand equity, and maximizing business profits. Advantech's DeviceOn/iService is a next-generation unified device management solution based on the WISE-DeviceOn platform. Moreover, Advantech DeviceOn/iService Software is a next-generation unified device management unified device management solution based on the WISE-DeviceOn platform. With support for batch operations and multi-device control, DeviceOn/iService enables easy device configuration and deployment for convenient remote device management.

### Specifications

Model	UTC-515J		
System	CPU	Intel® Celeron® J6412	
	Base Frequency	2.0GHz	
	Cache	1.5 MB L2 Cache	
	Memory	DDR4-3200 up to 32GB	
	HDD	1 x 2.5 internal SATA HDD bay	
	Network (LAN)	2 x RJ-45; LAN1: Realtek RTL8111H, LAN2: Realtek RTL8111H	
	I/O	4 x USB3.2 Gen2 (10Gbps)	
		2 x GbE, LAN1: Intel i219LM, LAN2: Intel i210AT/IT	
		1 x HDMI / 1 x DP	
	Stereo Speaker	1 x Audio Line-out	
1 x Mic-in			
2 x RS-232 COM (RS-422/485)*			
Expansion	2 x 2W		
	1x E-Key for wireless module (Type: 2230)		
	optional B-Key for LTE module 1x M-Key support SATA M.2 2242 module		
Mechanical	Mount Options	VESA 100 x 100 mm	
	Dimensions (W x H x D)	389.81 x 240.12 x 45.20 mm	
	Weight	4.85 kg (10.67 lb)	
Board Features	Watchdog Timer	Programmable 1 ~ 255 sec/min	
	TPM	TPM2.0	
Operating System	Win 10 IoT / Win 11 IoT		
Environmental	Operating Temperature	0 ~ 40 °C/32 ~ 104 °F	
	Relative Humidity	10 ~ 95% @ 40 °C/104 °F, non-condensing	
	Shock	Operating 10G peak acceleration (11ms duration), follow IEC 60068-2-27	
	Vibration	Operating Random Vibration Test 5 ~ 500Hz, 1Grms @with HDD; 2Grms @with SSD, follow IEC 60069-2-64	
	EMC/Safety	CE (RED Compliance), EN 61000-6-2: 2005 /AC: 2005, FCC, UL, CB, CCC, BSMI	
Power Supply	Front Panel Protection	IP65 rated/NEMA4 compliant	
	Input Voltage	12-24V <sub>DC</sub>	
	Power Consumption	Typical 40W Max 50W	
LCD Display	Adapter	12V, 7A (84W ITE adapter)	
	Size/Type	15.6" TFT LCD with LED backlight	
	Max. Resolution	1366 x 768 (FHD 1920 x 1080 Optional)	
	Max. Color	16.7M	
	Pixel Pitch (H x V)	248.25 x 248.25	
	Brightness	400 nits	
Touchscreen (PE/RE)	Viewing Angle	170°/160°	
	Type	Projected capacitive, Single point Analog Resistive 5-wires touch	
	Light Transmission	88% ± 2%, 80% ± 3%	
Controller	USB interface		

## Specifications (Cont.)

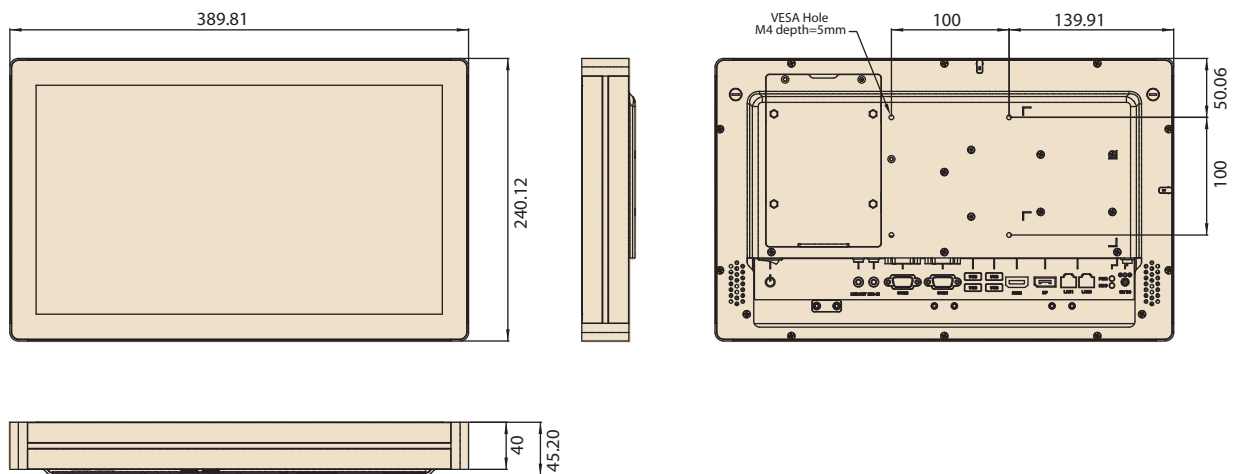
DeviceOn/iService Remote Device Management	Operating System	Windows 10
	Common Controls (Reboot, Shutdown)	✓
	Remote desktop	✓ (VNC)
	Audio Controls	✓*
	Connection Status	✓
	Hardware Status	✓*
	Hard Disk Status	✓*
	Batch Operation Support	✓
	OTA Storage Management	FTP
	OTA Software Updates	✓
	Software Watchlist	✓
	Software Start/Stop	✓*
	Peripherals Watchlist	✓*

\*Dependant on device model

Note: DeviceOn/iService software must be downloaded from the Advantech website at <https://www.advantech.com/search/?q=DeviceOn%2FiService&st=support&sst=Utility>

## Dimensions

Unit: mm



## Ordering Information

Part Number	Description
UTC-515J-PE	15.6" 9H PCT.T/S with Intel® Celeron® J6412, 4GB RAM, IT Adapter
UTC-515JP-ATBOE	15.6" 7H PCT.T/S with Intel® Celeron® J6412, 4GB RAM, IT Adapter
UTC-515JR-ATBOE	15.6" Resi. T/S with Intel® Celeron® J6412, 4GB RAM, IT Adapter
1702002600	Power Cord 3P UL/CSA(USA) 125V 10A 1.83M 180D
1702002605	Power Cord 2P FRANCE 10A/16A 220V 1.83M 90D
1700000596	Power cable, CCC, 3P, 10A, 250V, 183 cm (China)
1700018704	Power cable, BSI, 2P, 10A, 250V, 180 cm (UK)
1960060674N001	I/O cover for UTC-515 series

### Peripherals for UTC-500 Series

Part Number	Description
UTC-P01-A1E	5MP camera module (via USB)
UTC-P02-A0E	Magnet strip reader (via USB)
UTC-P03-A1E	RFID/NFC reader (via USB)
UTC-P06-A2E	Smart card reader (via USB)
UTC-P07-A4E	2D barcode module (Honeywell) (via USB)
UTC-P09-A0E	Fingerprint reader (via USB)
UTC-P21-A3E	2D Barcode reader + RFID + SCR

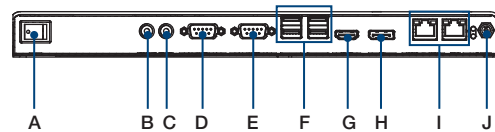
### Optional Accessories

Part No.	Description
96PD-00824	UTK-700 Desktop Stand (w/o Printer)
96PD-00825	UTK-700 Extension Tower (For 96PD-00824 only)
UTC-520-STAND1E	Desktop stand for UTC-515/520
UTC-T01-STAND	Triangle shape floor stand
UTC-H01-STANDE	H-shaped floor stand
ARES-2424X-S170201	Table Stand, 100x100/75x75
ARES-12250-L101000	Wall Mount, 75/100mm

### UTC-515 WiFi Ordering Information

Part No.	Description
UTC-WIFI-A4E	EWM-W163M201E 802.11ac/a/b/g/n 2T2R WIFI with BT 4.1 QCA6174A, M.2 2230
UTC-WIFI-A5E	AIW-163BR 802.11ax with BT5.2, PCIe-USB, Realtek 8852BE, M.2 2230

## Fully Integrated I/O



- A. Power Switch
- B. Line-out
- C. Mic-in
- D. COM2
- E. COM1
- F. USB 3.2 x 4
- G. HDMI
- H. DP
- I. Lan ports x 2
- J. DC input

# DeviceOn/iService

## Unified Remote Device Management Software



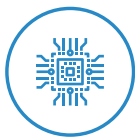
### Features

- Supports Advantech devices equipped with Windows, Android, and Linux OS
- Flexible device, location, user, and permissions management
- Enables remote monitoring and control of hardware, software, and peripherals
- Supports over-the-air (OTA) firmware and software updates
- Ensures quick, easy, and secure device onboarding
- RESTful APIs for third-party system integration

### Introduction

Advantech's DeviceOn/iService is a next-generation unified device management solution based on the WISE-DeviceOn platform. Designed to enable centralized monitoring and remote management, DeviceOn/iService supports Advantech devices equipped with Windows, Linux, or Android operating systems. The software also supports the management of applications and integrated peripherals, such as a barcode scanner, card reader, camera, and printer. Users can remotely access and control connected devices, take screenshots, rollout OTA upgrades, and use remote desktop capabilities for troubleshooting from any location at any time. Moreover, DeviceOn/iService supports batch operations to facilitate the management of multiple devices simultaneously for easy and convenient device configuration and deployment.

### Total Management



#### Devices & Hardware

- Windows, Linux, Android
- Hardware, storage, battery



#### Software & Peripherals

- Software monitoring & access
- Screens, USB devices, printers



#### Open for Expansion

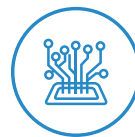
- Peripheral integration
- Open APIs for integration

### Remote Access



#### Real-Time Monitoring

- Connection/hardware status
- Software/peripheral status
- Failure notifications



#### Remote Controls

- Power controls
- Audio, backlight controls
- Software controls



#### Troubleshooting

- Screenshots
- Remote desktop support

### Operational Efficiency



#### OTA updates

- System/software updates
- File repository management
- App store



#### Batch Controls

- 1-to-many batch reboot, etc.
- Time-saving tasks



#### Setup Booster

- Software/peripheral watchlist
- Roles, rule templates

Note: Some functions may vary according to the product

### System Architecture

