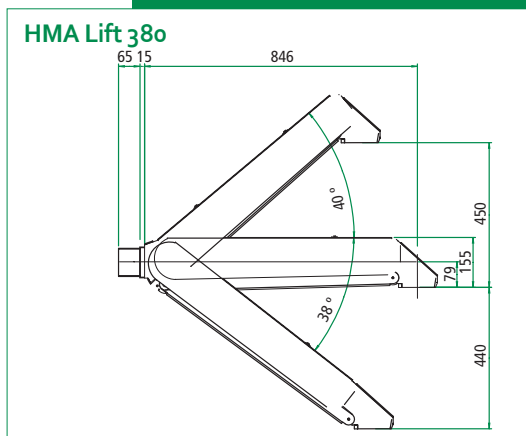
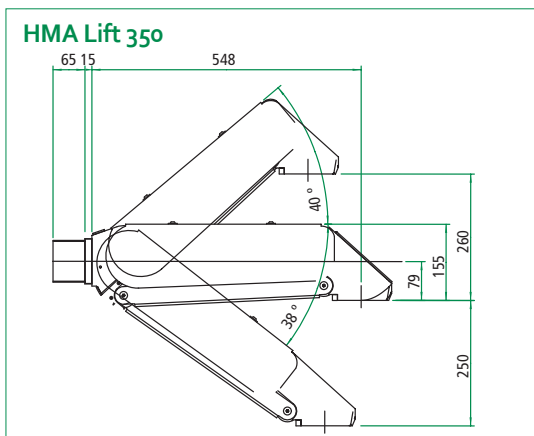


**HMA LIFT 350/380**  
*HMA LIFT 350/380*

- ▶ Stufenlos verstellbarer Lift mit innerer Kabelführung für Steuergehäuse
- ▶ *Continuously adjustable lift with internal cable ducting system for control boxes*

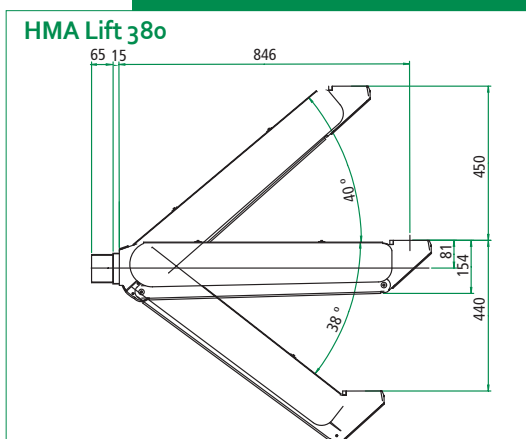
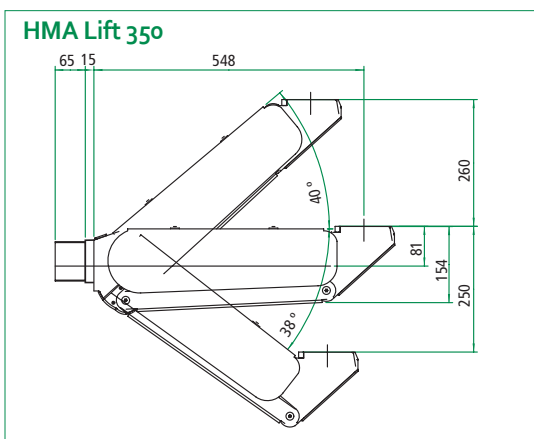


### HÄNGENDE MONTAGE / HANGING MOUNTING



Art. Nr. / Part No.:  
601-xx / 681-xx

### PULTMONTAGE / DESK MOUNTING



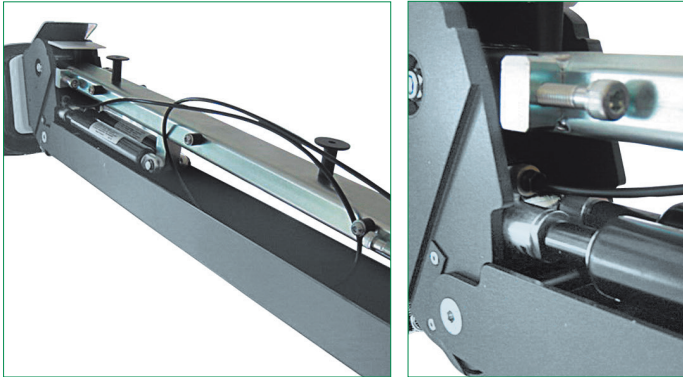
Art. Nr. / Part No.:  
602-xx / 682-xx

### TECHNISCHE DATEN / TECHNICAL DATA

	HMA Lift 350	HMA Lift 380
► Modell / Design model	HMA Lift 350	HMA Lift 380
► Auslegerlänge / Extension arm length	548 mm	846 mm
► Hub nach oben / Stroke upwards	260 mm	450 mm
► Hub nach unten / Stroke downwards	250 mm	440 mm
► Anschlussstragarm / Suspension system	HLT oder (or) KSE 100	HLT oder (or) KSE 100
► max. Kabeldurchlass / max. cable duct	40 mm x 19 mm	40 mm x 19 mm

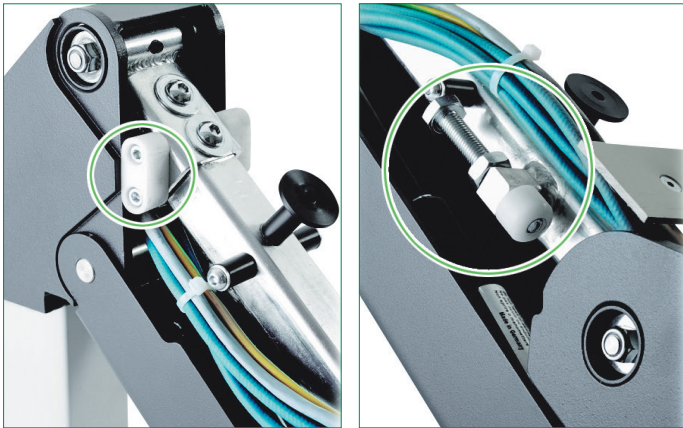
# DETAILS

## DETAILS



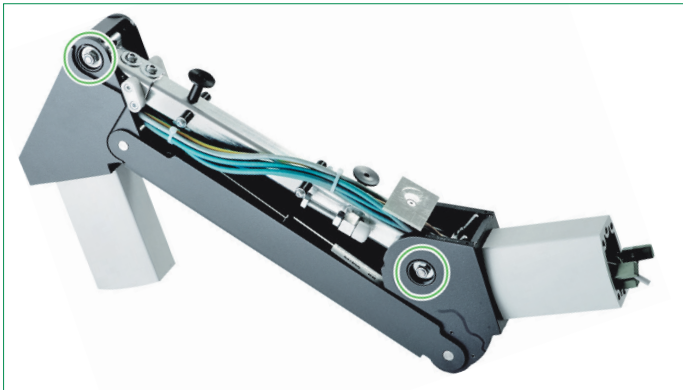
### HUBBLOCKIERUNG / TRAVEL LOCK (OPTION)

- ▶ Automatische Blockierung der Vertikalbewegung in jeder Position über den gesamten Hub  
*Automatic blocking of the vertical stroke in each position over the entire stroke*
- ▶ Lösen der Blockierung durch Betätigung eines Druckknopfes  
*Unlocking by use of pushbutton*
- ▶ Druckknopf wird üblicherweise in das Bedienfeld integriert  
*Pushbutton customarily integrated in the operator panel*



### HUBBEGRENZUNG / STROKE LIMITER

- ▶ Hubbegrenzung HMA 350 nach oben und unten stufenlos einstellbar  
*Stroke limiter HMA Lift 350 continuously adjustable up- and downwards*
- ▶ Hubbegrenzung HMA Lift 380 nach oben und unten stufenlos einstellbar  
*Stroke limiter HMA Lift 380 continuously adjustable up- and downwards*

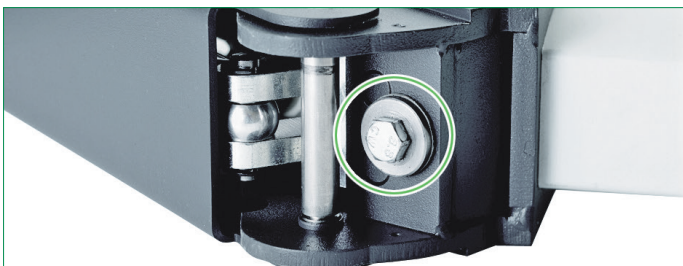


### FRIKTION / FRICTION

- ▶ Friktion durch vier Schrauben manuell einstellbar  
*Friction adjustable by four screws*

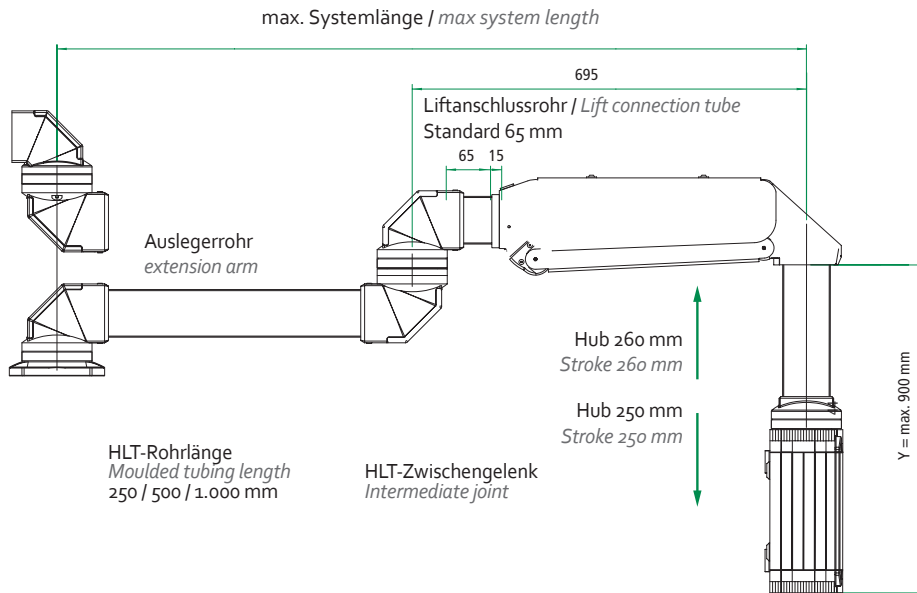
### KABELVOLUMEN / CABLE CAPACITY

- ▶ max. 760mm<sup>2</sup> / max. 760mm<sup>2</sup>
- ▶ max. Kabeldurchmesser Ø 10 mm z.B. max. 7 x Ø 10 mm  
*max. cable section Ø 10 mm e.g. max. 7 x Ø 10 mm*
- ▶ Kabel müssen schleppfähig sein  
*Only drag chain suitable cables*

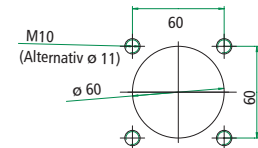


### GEWICHTSEINSTELLUNG / ADJUSTMENT

- ▶ Justage der Gewichtseinstellung  
*Precision adjustment of weight positioning*

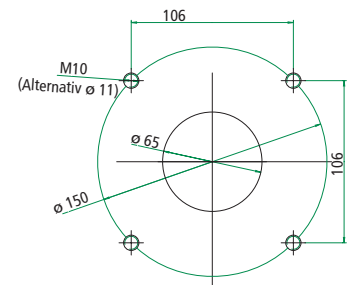


### ► Anschlussmaße Drilling templates



### HLT Wandgelenk Wall joint

Art. Nr. / Part No.: 40102-01



### HLT Aufsatzgelenk Setup joint

Art. Nr. / Part No.: 40101-01

- Artikelnummern der Tragarmkomponenten entnehmen Sie bitte dem HLT Prospekt  
You will find the Part No. of the suspension system in the HLT brochure

Artikelnummern / Part numbers HMA Lift 350

60 X X X - 01-01

#### Gewichtsbereich / Loading weight

- 1 = 5 - 10 kg
- 2 = 7 - 13 kg
- 3 = 13 - 21 kg
- 4 = 18 - 28 kg
- 5 = 26 - 37 kg
- 6 = 36 - 52 kg
- 7 = 45 - 60 kg

#### Liftanschlussrohr / Lift connection tube

- 1 = 65 mm Standard
- 2 = 100 mm
- 3 = 200 mm
- 4 = 300 mm
- 5 = 400 mm
- 6 = 500 mm

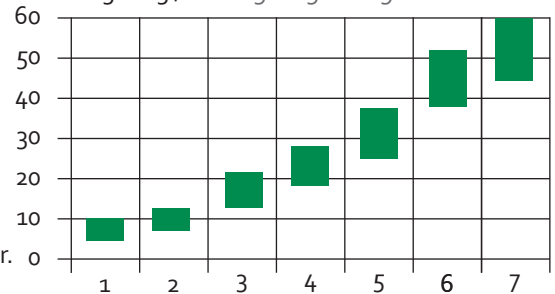
#### Ausführung / Version

- 1 = Standard hängend / Hanging mounting
- 2 = Pultmontage / Desk mounting
- 3 = Standard hängend blockierbar / Hanging mounting blockable
- 4 = Pultmontage blockierbar / Desk mounting blockable

- Standardfarbe RAL 7016/7035, andere Farben auf Anfrage  
Standard colour:  
Similar to RAL 7016/7035 (other colours on request)

Gewichtsbereiche Loading weight	max Systemlängen / max. system length	
	ohne Zwischengelenk / without intermediate joint	mit Zwischengelenk / with intermediate joint
	HLT	HLT
5 - 10 Kg	2000 mm	2000 mm
7 - 13 Kg	2000 mm	2000 mm
13 - 21 Kg	2000 mm	2000 mm
18 - 28 Kg	2000 mm	1800 mm
26 - 37 Kg	1700 mm	1500 mm
36 - 52 Kg	1300 mm	1100 mm
45 - 60 Kg	1150 mm	1000 mm

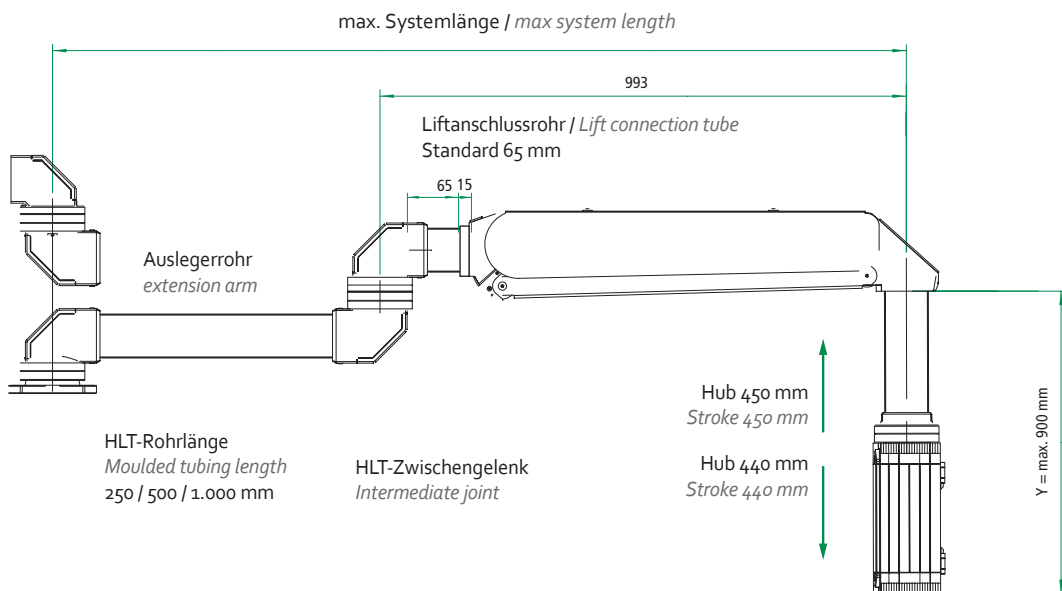
#### Zuladung in kg / Loading weight in kg



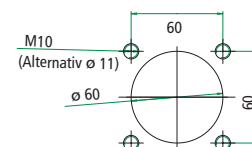
Gewichtsbereich Nr.  
Loading weight No.

# HMA LIFT 380 + TRAGARM HLT

## HMA LIFT 380 + SUSPENSION SYSTEM HLT



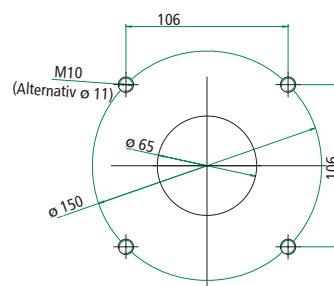
### ► Anschlussmaße Drilling templates



#### HLT Wandgelenk

Wall joint

Art. Nr. / Part No.: 40102-01



#### HLT Aufsatzgelenk

Setup joint

Art. Nr. / Part No.: 40101-01

- Artikelnummern der Tragarmkomponenten entnehmen Sie bitte dem HLT Prospekt  
You will find the Part No. of the suspension system in the HLT brochure

Artikelnummern / Part numbers HMA Lift 380

68 X X X - 01-01

#### Gewichtsbereich / Loading weight

- 1 = 5 - 10 kg
- 2 = 7 - 13 kg
- 3 = 13 - 21 kg
- 4 = 18 - 28 kg
- 5 = 26 - 37 kg
- 6 = 36 - 52 kg
- 7 = 45 - 60 kg

#### Liftanschlussrohr / Lift connection tube

- 1 = 65 mm Standard
- 2 = 100 mm
- 3 = 200 mm
- 4 = 300 mm
- 5 = 400 mm
- 6 = 500 mm

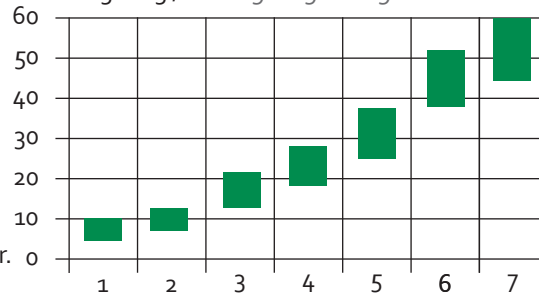
#### Ausführung / Version

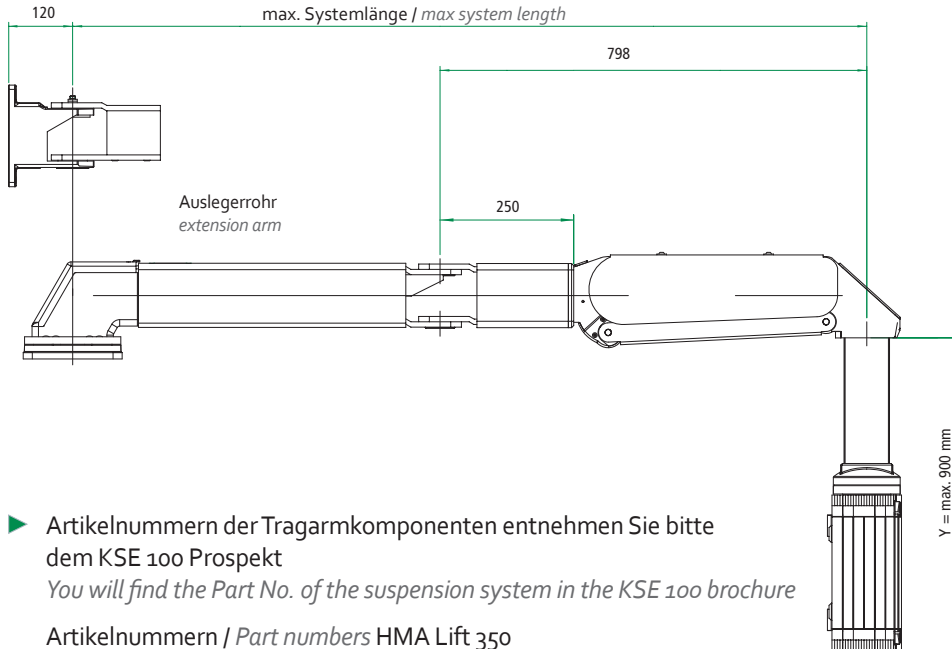
- 1 = Standard hängend / Hanging mounting
- 2 = Pultmontage / Desk mounting
- 3 = Standard hängend blockierbar / Hanging mounting blockable
- 4 = Pultmontage blockierbar / Desk mounting blockable

- Standardfarbe RAL 7016/7035, andere Farben auf Anfrage  
Standard colour:  
Similar to RAL 7016/7035 (other colours on request)

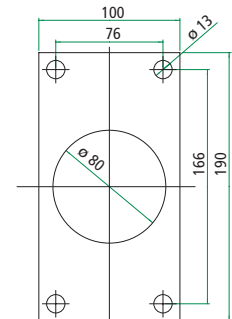
Gewichtsbereiche Loading weight	max Systemlängen / max. system length	
	ohne Zwischengelenk / without intermediate joint	mit Zwischengelenk / with intermediate joint
	HLT	HLT
5 - 10 Kg	2000 mm	2000 mm
7 - 13 Kg	2000 mm	2000 mm
13 - 21 Kg	2000 mm	2000 mm
18 - 28 Kg	1900 mm	1650 mm
26 - 37 Kg	1600 mm	1400 mm
36 - 52 Kg	1200 mm	-
45 - 60 Kg	1000 mm	-

#### Zuladung in kg / Loading weight in kg

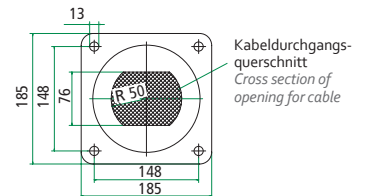




### ► Anschlussmaße / Drilling templates



KSE 100 Wandgelenk / Wall joint  
Art. Nr. / Part No.: 4-5-2



KSE 100 Aufsatzgelenk  
Setup joint  
Art. Nr. / Part No.: 4-5-1

- Artikelnummern der Tragarmkomponenten entnehmen Sie bitte dem KSE 100 Prospekt  
You will find the Part No. of the suspension system in the KSE 100 brochure

Artikelnummern / Part numbers HMA Lift 350

6o X X X XX - o1

o2 = KSE 100 für Wandgelenk

KSE 100 for wall joint

o3 = KSE 100 für Aufsatzgelenk

KSE 100 for setup joint

o4 = KSE 100 für Zwischengelenk

KSE 100 for intermediate joint

**Gewichtsbereich / Loading weight**

1 = 5 - 10 kg

2 = 7 - 13 kg

3 = 13 - 21 kg

4 = 18 - 28 kg

5 = 26 - 37 kg

6 = 36 - 52 kg

7 = 45 - 60 kg

**Liftanschlussrohr / Lift connection tube**

1 = 250 mm Standard

2 = 500 mm

3 = 750 mm

4 = 1000 mm

**Ausführung / Version**

1 = Standard hängend / Hanging mounting

2 = Pultmontage / Desk mounting

3 = Standard hängend blockierbar /

Hanging mounting blockable

4 = Pultmontage blockierbar /

Desk mounting blockable

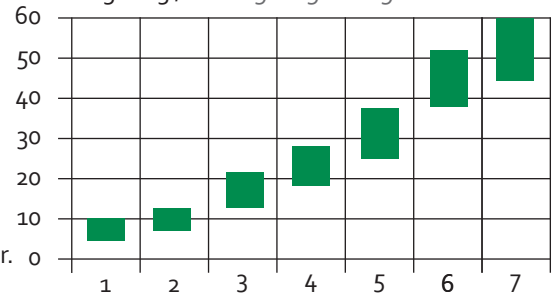
- Standardfarbe RAL 7016/7035, andere Farben auf Anfrage

Standard colour:

Similar to RAL 7016/7035 (other colours on request)

Gewichtsbereiche Loading weight	max Systemlängen / max. system length	
	ohne Zwischengelenk / without intermediate joint	mit Zwischengelenk / with intermediate joint
	KSE 100	KSE 100
5 - 10 Kg	3000 mm	3000 mm
7 - 13 Kg	3000 mm	3000 mm
13 - 21 Kg	3000 mm	3000 mm
18 - 28 Kg	3000 mm	3000 mm
26 - 37 Kg	3000 mm	2800 mm
36 - 52 Kg	3000 mm	2200 mm
45 - 60 Kg	3000 mm	1900 mm

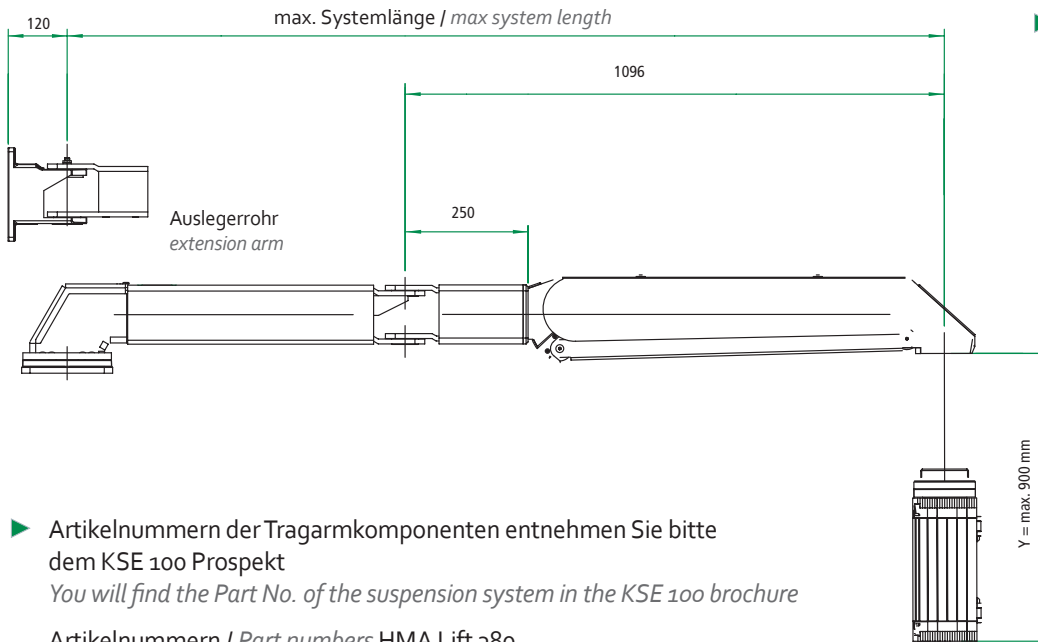
Zuladung in kg / Loading weight in kg



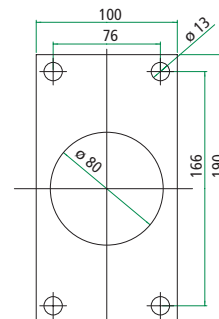
Gewichtsbereich Nr.  
Loading weight No.

# HMA LIFT 380 + TRAGARM KSE 100

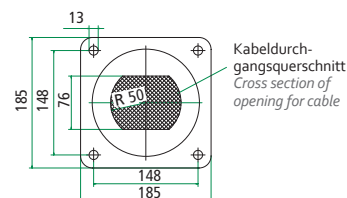
HMA LIFT 380 + SUSPENSION SYSTEM KSE 100



## ► Anschlussmaße / Drilling templates



KSE 100 Wandgelenk / Wall joint  
Art. Nr. / Part No.: 4-5-2



KSE 100 Aufsatzgelenk  
Setup joint  
Art. Nr. / Part No.: 4-5-1

- Artikelnummern der Tragarmkomponenten entnehmen Sie bitte dem KSE 100 Prospekt  
You will find the Part No. of the suspension system in the KSE 100 brochure

Artikelnummern / Part numbers HMA Lift 380

68 X X X XX - 01

02 = KSE 100 für Wandgelenk

KSE 100 for wall joint

03 = KSE 100 für Aufsatzgelenk

KSE 100 for setup joint

04 = KSE 100 für Zwischengelenk

KSE 100 for intermediate joint

Gewichtsbereich / Loading weight

1 = 5 - 10 kg

2 = 7 - 13 kg

3 = 13 - 21 kg

4 = 18 - 28 kg

5 = 26 - 37 kg

6 = 36 - 52 kg

7 = 45 - 60 kg

Liftanschlussrohr / Lift connection tube

1 = 250 mm Standard

2 = 500 mm

3 = 750 mm

4 = 1000 mm

Ausführung / Version

1 = Standard hängend / Hanging mounting

2 = Pultmontage / Desk mounting

3 = Standard hängend blockierbar /

Hanging mounting blockable

4 = Pultmontage blockierbar /

Desk mounting blockable

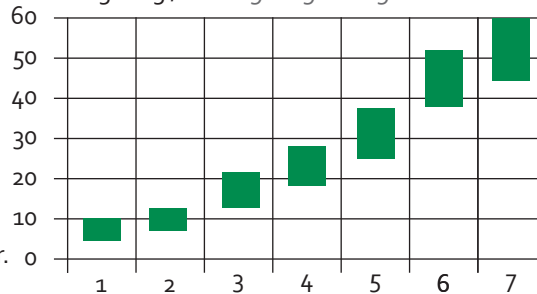
- Standardfarbe RAL 7016/7035,  
andere Farben auf Anfrage

Standard colour:

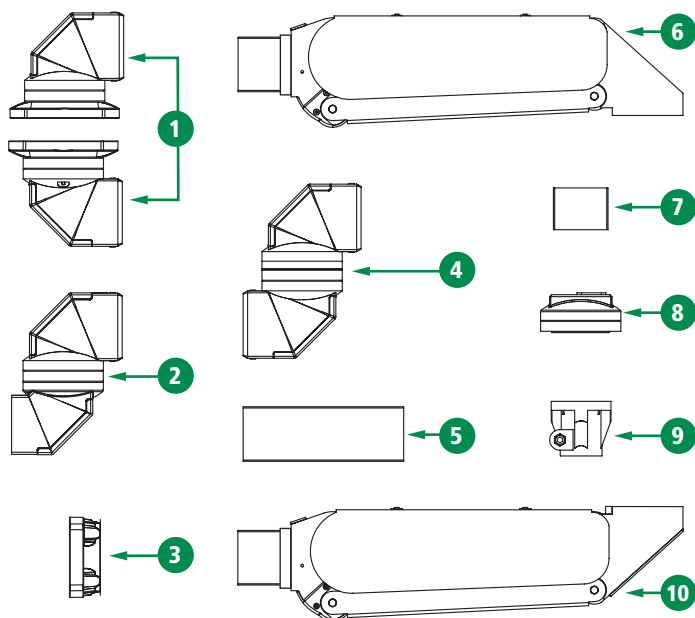
Similar to RAL 7016/7035 (other colours on request)

Gewichtsbereiche Loading weight	max Systemlängen / max. system length	
	ohne Zwischengelenk / without intermediate joint	mit Zwischengelenk / with intermediate joint
	KSE 100	KSE 100
5 - 10 Kg	3000 mm	3000 mm
7 - 13 Kg	3000 mm	3000 mm
13 - 21 Kg	3000 mm	3000 mm
18 - 28 Kg	3000 mm	3000 mm
26 - 37 Kg	3000 mm	2600 mm
36 - 52 Kg	3000 mm	2000 mm
45 - 60 Kg	3000 mm	1800 mm

Zuladung in kg / Loading weight in kg

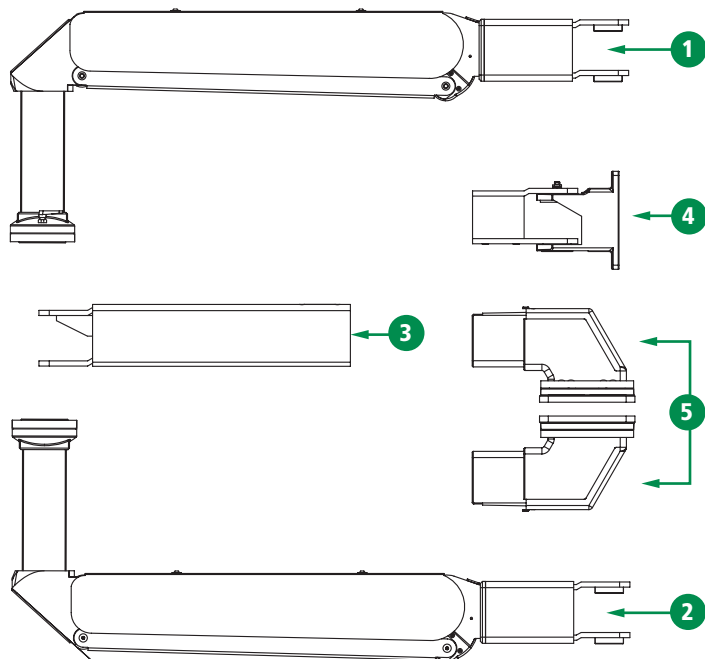


HASEKE  
INDUSTRY



#### HLT + HMA LIFT 350 / 380

- 1 HLT - Aufsatzgelenk / *Top mounted joint*
- 2 HLT - Wandgelenk / *Wall joint*
- 3 HLT - Wandflansch / *Wall flange*
- 4 HLT - Zwischengelenk / *Intermediate joint*
- 5 HLT - Profilrohr / *Moulded tubing (z.B. / e.g. 500 mm)*
- 6 HMA Lift 350 / 380 Hängende (Standard-)Version  
*Hanging (standard) version*
- 7 HLT - Liftanschlussrohr / *Lift connection tube*
- 8 HLT - Kupplung / *Coupling*
- 9 Adapter Rundrohr Ø48 mm / *Adaptor circular Ø48 mm*
- 10 HMA Lift 350 / 380 Pultversion / *Desk version*



#### KSE 100 + HMA LIFT 350 / 380

- 1 KSE 100 - Hängende (Standard-)Version mit Rohr für Zwischengelenk  
*Hanging (standard) version with tube for intermediate joint*
  - 2 KSE 100 - Pult Version mit Rohr für Zwischengelenk  
*Desk version with tube for intermediate joint*
  - 3 KSE 100 - Auslegerrohr für Zwischengelenk, Wandgelenk oder Aufsatzgelenk  
*Extension Arm for intermediate joint, wall joint or setup joint*
  - 4 KSE 100 - Wandgelenk  
*Wall joint*
  - 5 KSE 100 - Aufsatzgelenk  
*Top mounted joint*
- Ihr Systempartner:



gbm mbH  
 Lehmkuhlenweg 16  
 41065 Mönchengladbach  
 Fon +49(0)2161. 30899. 0  
 Fax +49(0)2161. 30899. 1  
 sales@gbm.de | www.gbm.de